



MODEL SLX400E

GRAVITY SOFT SERVE FREEZER

FEATURES

This freezer is designed to streamline your operations and ensure consistent, high-quality results. Serve smooth, creamy, and consistent yogurt, ice cream, custard, or sorbet every time.

Meets ADA Specifications

Making self-service applications accessible for all customers.

Twist Feature

Dispenses two separate flavors or an equal combination of both, providing versatile menu options.

Precision Control

The Virtual Quality Management System™ monitors temperature to ensure superior taste and quality.

Durable & Long Lasting Scraper Blades

Reversible scraper blades maximizes durability and minimizes replacements while ensuring a smooth, consistent texture for premium-quality frozen treats.

Innovative Auger Technology

Gently blends for optimal texture and consistency.

Standby Mode

Reduces energy costs while maintaining safe product storage during non-business hours.



PERFECT FOR

- High-Volume Cafeterias
- Quick Service Restaurants
- Retirement Villages
- Frozen Yogurt Shops

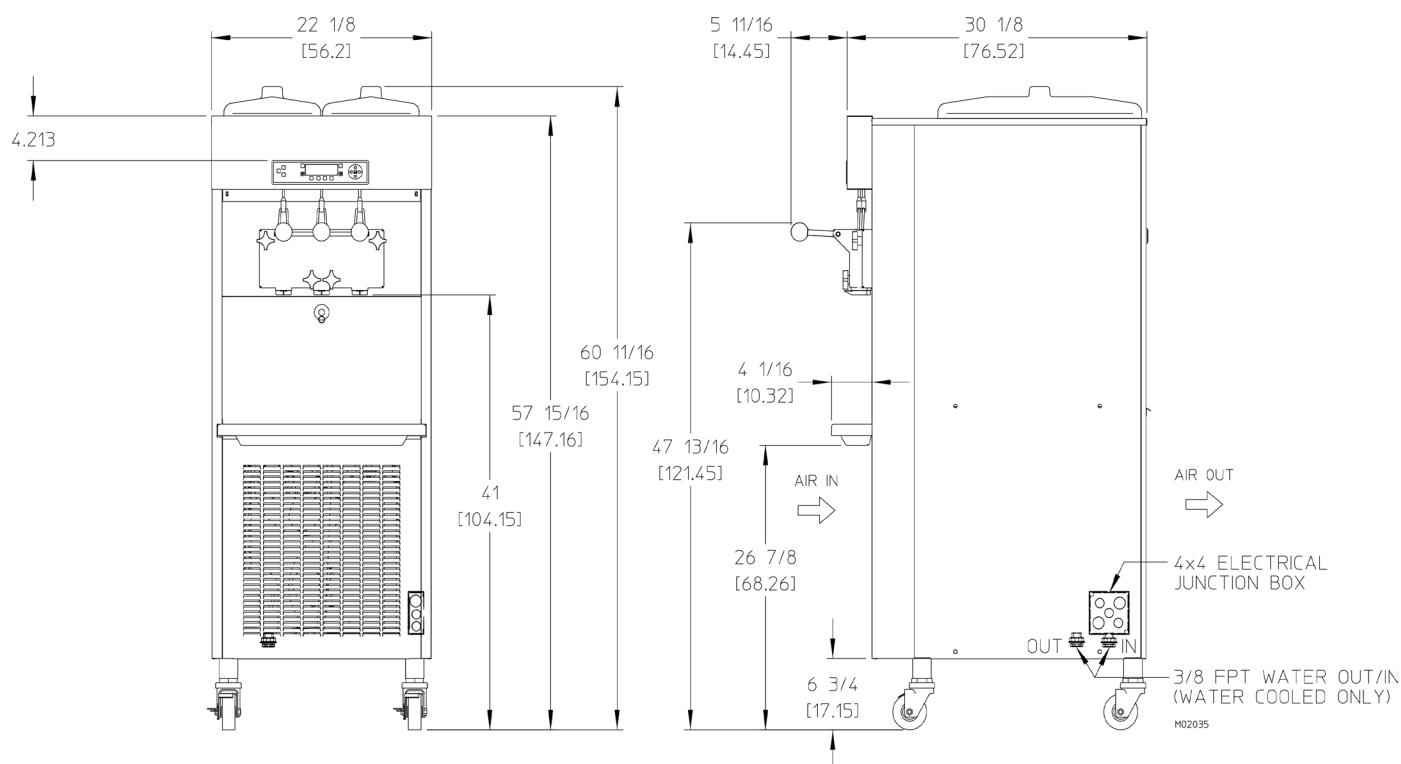


SLX400E





MODEL SLX400E SPECIFICATIONS



Weight

Net	470 lbs	213 kg
Crated	568 lbs	257 kg

Volume

58.42 cubic ft	1.65 cubic m
----------------	--------------

Dimensions

22-1/8" x 30-1/8" x 60-11/16"
56.20 cm x 76.52 cm x 154.15 cm

Mix Hopper Capacity

Two - 12 qts (11.4 liters) each

Freezing Cylinder Capacity

Two - 2.7 qts (2.6 liters) each

Beater Motor- Qty, hp

Two , 1 hp

Refrigerant Types*

One, 6,900 Btuh
R404a R452a

Separate Hopper Refrigerant

One, 500 Btuh
R134a

Electrical

	Total Amps (qty)	Max Fuse Size	NEMA Plug Type
208-230/60/1 Air	16	30	6-20 P
208-230/60/1 Water	16	30	6-20 P
	Total Amps (qty)	kW	Poles (P) Wires(W)
220-240/50/1 Air	15	3.1	2P 3W
220-240/50/1 Water	15.7	3.2	2P 3W

Exterior Space Required

Air Cooled: 6" (15.2 cm) air space required on both sides OR 12" (30.48 cm) on the left panel and 3" (7.62 cm) on the right panel for circulation. Open at the top

Certified and/or listed by:



*UL listed and listed by Underwriters Laboratories under Canadian National Standard C22.2 No. 120-13

**Selected voltages only. Contact Electro Freeze® / H.C. Duke to verify agency needs

*Customer is responsible for complying with local refrigeration regulations.



DISTRIBUTOR



LOCATOR